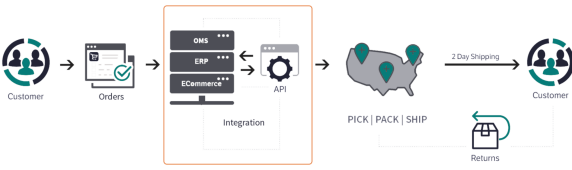
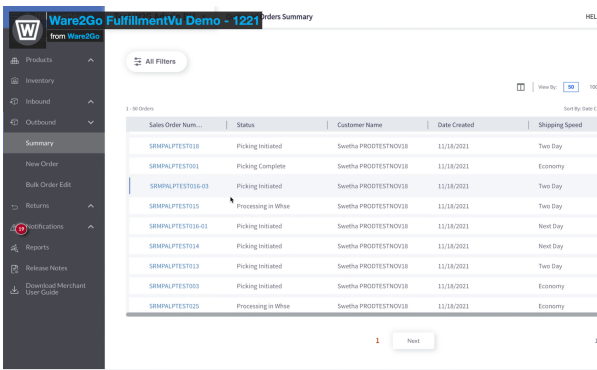


VO

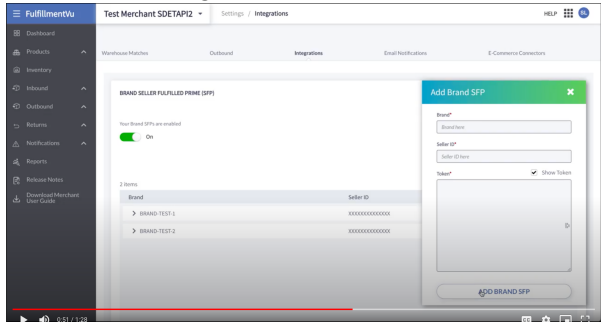
Visual

<p>(music)</p>	<p>Intro: animated logo or similar</p>
<p>FulfillmentVu, from Ware2Go, is your single access point for all things fulfillment, delivery, and inventory management.</p> <p>Give your team more time to focus on what they do best, instead of juggling multiple platforms. And empower them to make smarter decisions with in-depth supply chain reporting.</p>	 <p>Animated version of this – something simple, like the gear in the middle turning, the arrows blinking, and the points on the map popping up one at a time.</p>
<p>With over 80 integration points, a robust API, and developer's portal, FulfillmentVu fits seamlessly into your current tech stack, and setup is a breeze.</p>	<p>Logos of all of our integrations popup on screen (starting with Shopify, BigCommerce, Amazon, ShipStation)</p>
<p>All of your sales channels are connected to FulfillmentVu, so orders are automatically pushed to the warehouse – no more formatting spreadsheets and manually uploading orders multiple times per day. Orders are routed in real-time for faster processing, and all orders placed before 3pm are fulfilled on the same day.</p>	<p>Graphic showing orders coming from multiple sales channels, being sent through FulfillmentVu, and then being sent to warehouses.</p> 
<p>With all your sales channels connected through one platform, you can track all of your outbound shipments through one dashboard – see order status, date created, and shipping speed.</p>	<p>File Name: Full Demo_FulfillmentVu Time Code: 4:07</p> 
<p>And FulfillmentVu's order logic automatically routes orders to the warehouse closest to</p>	<p>(Visual for this? Maybe there's a network map we can use? Possibility for an animation?)</p>

your end customer to guarantee the lowest possible time in transit.

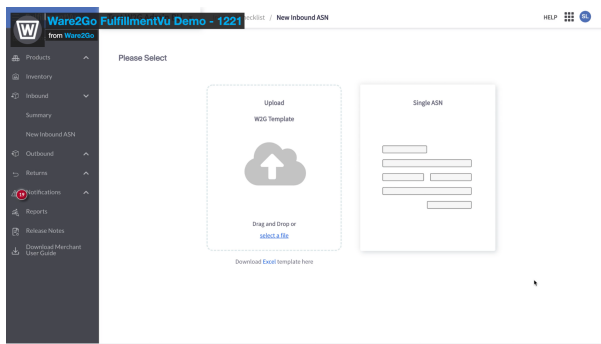
Amazon sellers managing multiple accounts can see a consolidated dashboard – no more toggling between separate accounts or manually consolidating multiple reports.

File Name: Amazon SFP
Time Code: 0:32-0:59 (ish – FF through or cut the slow-moving content to fit)



Inbound orders are also submitted through FulfillmentVU. Sending an electronic Advance Shipment Notice (or ASN) to the warehouse ensures better communication so the warehouse is ready to receive and process your inventory as soon as it arrives.

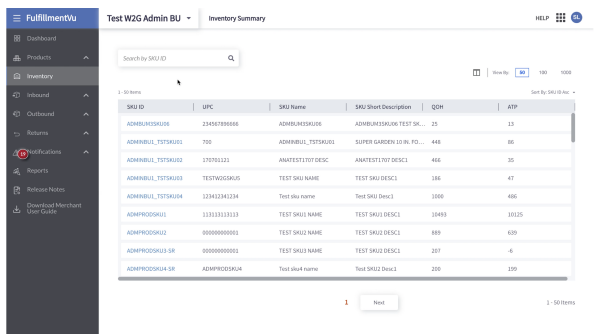
File Name: Full Demo_FulfillmentVu
Time Code: 3:02



FulfillmentVu's inventory module shows you real-time inventory levels across all warehouses. See quantity on hand and available to promise at a glance to make informed reorder decisions based on sales velocity and current inventory levels.

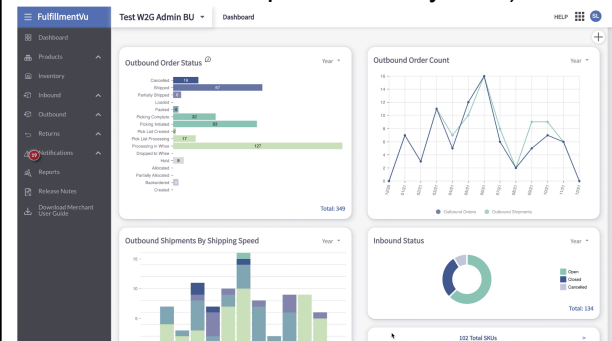
You can also set custom replenishment alerts so you never have to wonder if it's time to restock.

File Name: Full Demo_FulfillmentVu
Time Code: 1:59-2:29 (the part where she scrolls down is probably the most interesting)



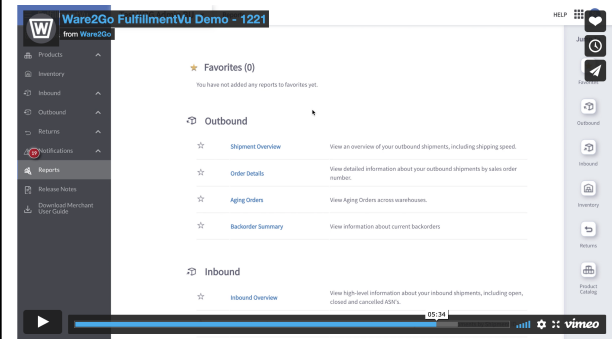
Your dashboard ties everything together, showing you a full picture of order and shipment statuses – including order status, outbound shipments, inbounds, and returns.

File Name: Full Demo_FulfillmentVu
Time Code: 0:25-0:45 (Would be good to see the scroll down or up and filter by date)



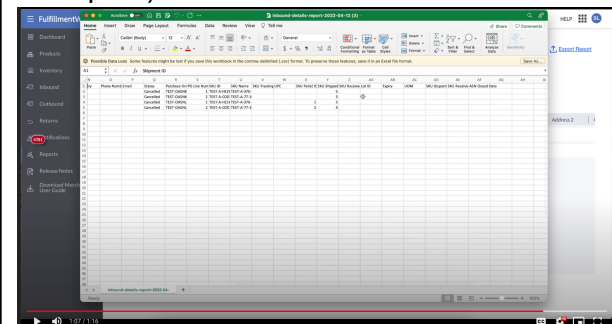
And FulfillmentVu's Reporting Module offers a host of reports to review outbound details, inventory details, inbound reconciliations, and more.

File Name: FulfillmentVu Report Export
Time Code: 0:12-0:26



Reports can be exported to share with your team and modify as needed. You can even sign up for email notifications to receive reports in your inbox on a nightly basis.

File Name: FulfillmentVu Report Export
Time Code: 0:33-1:07 (FF or cut to show clicking into report, downloading, and opening the report.)



Everything you need to manage your supply chain in one place.

Outro: Animation at the end of OTT ads

Simplify your fulfillment with FulfillmentVu, from Ware2Go.

CTA: Schedule your free demo today.

<link to Let's Chat page>